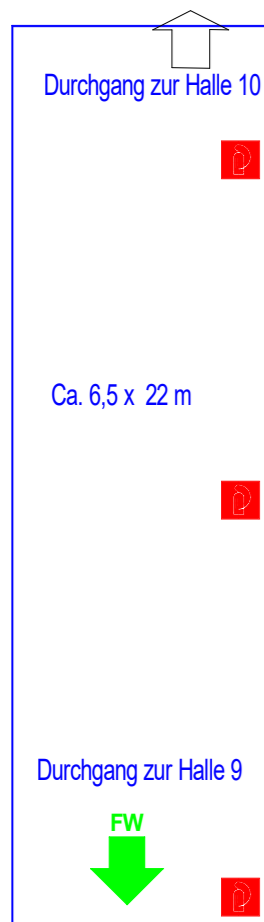
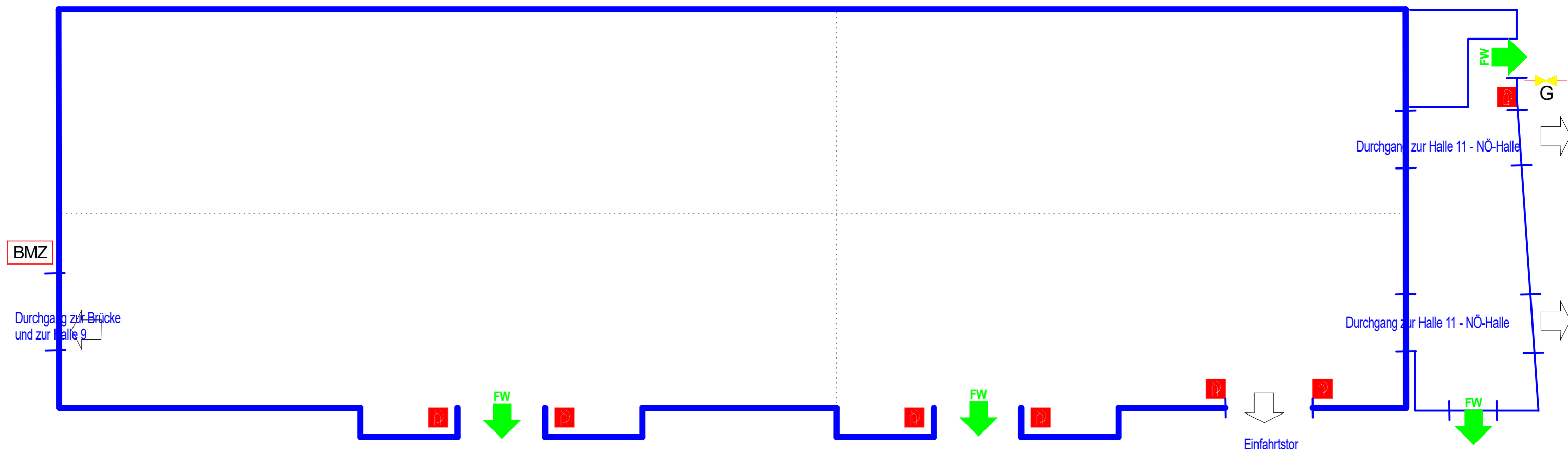







WIESELBURGER HALLE, HALLE 10: (69,30 x20,60 m) Kunstharzboden, keine Kojenbegrenzung



überdachte Brücke über die kl. Erlauf

-  Druckknopfmelder
-  Feuerlöscher
-  Verteilerkasten
-  Fluchtweg
-  Hauptabsperreinrichtung für Gas